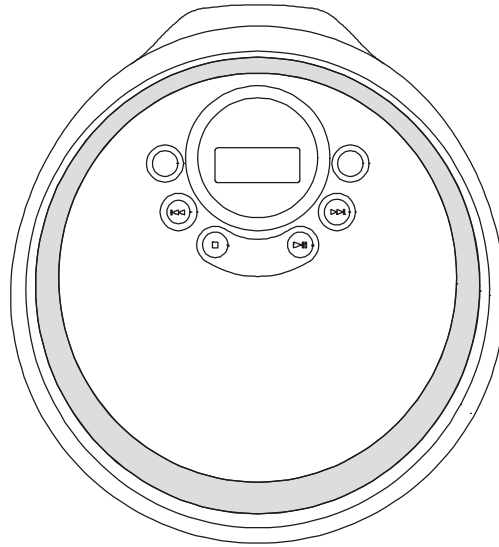


# Service Manual

## COMPACT DISC COMPACT PLAYER




**DM8700-00**

## CONTENTS

	<b>Page</b>
Specifications & Performance Specifications .....	2
Electrical Parts List .....	3
Printed Circuit Boards .....	6
Wiring Diagram .....	8
Schematic Diagram .....	9
Voltage Chart .....	11
IC Diagrams & IC Pins Description .....	13
Block Diagram .....	16
Exploded Drawing and Mechanical Parts List .....	17

## PRODUCT SAFETY NOTICE

Many electrical and mechanical parts in this chassis have special safety characteristics. These safety characteristics often pass unnoticed and the protection afforded by them cannot necessarily be obtained by using replacement components rated for higher voltage, wattage, etc. Replacement parts that have these special safety characteristics are identified in this manual and its supplements; electrical components having such features are identified by  in the schematic diagram and the parts list.

Before replacing any of these components, read the parts list in this manual carefully. The use of substitute replacement parts that do not have the same safety characteristics as specified in the parts list may create shock, fire or other hazards.

## SPECIFICATIONS

### GENERAL

Output (at 1kHz 0dB Level):	Headphones / Earphone (Stereo Minijack) 15mW + 15mW at 16Ω to 32Ω	
Power Requirements:	2 size "AA" (LR6 or SUM-3) Alkaline Batteries; or DC in 6V, 350mA Power Adaptor Polarity of Plug 	
Dimensions:	Approx. 129 x 30 x 142mm (W/H/D)	
Weight:	Approx. 225g (not include batteries)	
Operating Voltage:	U.S.A., Canada	:120V AC ±5% 60Hz
	Middle East and Australia	:240V AC ±5% 50Hz
	UK and Germany	:230V AC ± 5% 50Hz
	Chile	:230V AC ± 5% 50Hz
	Singapore, Malaysia & Thailand	:200-240V AC ±5% 50Hz
	Japan	:100V AC ±5% 50/60 Hz

## PERFORMANCE SPECIFICATIONS

### GENERAL TEST CONDITION

Power Supply	:AC -DC Adaptor 100V:6V DC 60H Battery: 3V (AAx2) 120V: 6V DC 60Hz 230V: 6V DC 50Hz 110/220V: 6V
Headphone Output Load	:16 ohm or 32 ohm
Reference Output	:5mW
Input Signal Source	:CBS SONY YED7 (PTD-001) SONY PHILIPS SBC 444A (TCD-725, TDC-731, TDC-712) A.Bex

### EARPHONE OUTPUT

	TEST ITEMS	UNIT	NOMINAL	LIMIT
1	10% THD Output Power (1kHz, 0dB) (16 or 32 ohm)	mW	-	15
*2	Signal to Noise Ratio (1kHz)	dB	76	70
*3	Channel Separation (1kHz, 0dB)	dB	55	45
*4	Total Harmonic Distortion 1kHz	%	0.3	1
5	Frequency Response (1kHz, 0dB) 100Hz	dB	±1	±3
		dB	±1	±3
		dB	±3	±6

\*with External A Filter

### PLAYABILITY TESTING

	TEST ITEMS	UNIT	LIMIT
1	Interruption (PHILIPS SBC - 444A)	mm	0.6
2	Black Dot (PHILIPS SBC - 444A)	mm	0.6
3	Finger Print (ESP OFF) (PHILIPS SBC - 444A)	-	TN0,18,19
4	Vertical (A.Bex TDC - 731R)	mm	0.5
5	Eccentricity (A.Bex TDC - 712R)	μm	140

## ELECTRICAL PARTS LIST

Ref. No.	Description	Mfr's Part No.	Qty.
<b>PCB</b>			
MAIN PCB	PCB CDM201-40-01-01 (FR4) DOUBLE SIDED	033-CDM201-100	1
CONTROL PCB	PCB CDM212-01-01 240x104.5x0.8mm/8 (94HB) SINGLE PCB	033-CDM212-101	1
<b>RESISTORS</b>			
R604,605	CHIP RESISTOR 56 ohm +-5% 1/10W (0805/2012)	001-356050-010	2
R117,118	CHIP RESISTOR 0 ohm +-5% 1/16W (0603/1608)	001-300052-016	2
R609	CHIP RESISTOR 10 ohm +-5% 1/16W (0603/1608)	001-310052-016	1
R601	CHIP RESISTOR 100 ohm +-5% 1/16W (0603/1608)	001-310152-016	1
R104,201,233,234,315, '316,608	CHIP RESISTOR 1 Kohm +-5% 1/16W (0603/1608)	001-310252-016	7
R273,274,501,510,606, '513,553,511	CHIP RESISTOR 10 Kohm +-5% 1/16W (0603/1608)	001-310352-016	8
R103,218,508,603,613	CHIP RESISTOR 100 Kohm +-5% 1/16W (0603/1608)	001-310452-016	5
R122,242	CHIP RESISTOR 1 Mohm +-5% 1/16W (0603/1608)	001-310552-016	2
R223	CHIP RESISTOR 15 Kohm +-5% 1/16W (0603/1608)	001-315352-016	1
R142	CHIP RESISTOR 150 Kohm +-5% 1/16W (0603/1608)	001-315452-016	1
R502	CHIP RESISTOR 1.8 Kohm +-5% 1/16W (0603/1608) (MCR03EZJH-182)	001-318252-016	1
R222,611	CHIP RESISTOR 18 Kohm +-5% 1/16W (0603/1608)	001-318352-016	2
R303	CHIP RESISTOR 180 Kohm +-5% 1/16W (0603/1608)	001-318452-016	1
R121,271,272,275,276, 602,612	CHIP RESISTOR 22 Kohm +-5% 1/16W (0603/1608)	001-322352-016	7
R168,219	CHIP RESISTOR 220 Kohm +-5% 1/16W (0603/1608)	001-322452-016	2
R503	CHIP RESISTOR 2.7 Kohm +-5% 1/16W (0603/1608)	001-327252-016	1
R504	CHIP RESISTOR 3.3 Kohm +-5% 1/16W (0603/1608)	001-333252-016	1
R129,130,615	CHIP RESISTOR 33 Kohm +-5% 1/16W (0603/1608)	001-333352-016	3
R309,310	CHIP RESISTOR 3.9 Kohm +-5% 1/16W (0603/1608)	001-339252-016	2
R616	CHIP RESISTOR 47 ohm +-5% 1/16W (0603/1608)	001-347052-016	1
R217	CHIP RESISTOR 470 ohm +-5% 1/16W (0603/1608)	001-347152-016	1
R220,505,617	CHIP RESISTOR 4.7 Kohm +-5% 1/16W (0603/1608)	001-347252-016	3
R167,342	CHIP RESISTOR 47 Kohm +-5% 1/16W (0603/1608) (MCR03EZJH-473)	001-347352-016	2
R105,112,280	CHIP RESISTOR 4.7 ohm +-5% 1/16W (0603/1608)	001-347852-016	3
R124,125,126,127	CHIP RESISTOR 68 Kohm +-5% 1/16W (0603/1608)	001-368352-016	4
R614	CHIP RESISTOR 680 Kohm +-5% 1/16W (0603/1608)	001-368452-016	1
R169	CHIP RESISTOR 7.5 Kohm +-5% 1/16W (0603/1608)	001-375252-016	1
R322,341	CHIP RESISTOR 75 Kohm +-5% 1/16W (0603/1608)	001-375352-016	2
R231,232	CHIP RESISTOR 8.2 Kohm +-5% 1/16W (0603/1608)	001-382252-016	2
R101	CHIP RESISTOR 91 ohm +-5% 1/16W (0603/1608)	001-391052-016	1
R509	CHIP RESISTOR 91 Kohm +-5% 1/16W (0603/1608)	001-391352-016	1
VR301	ROTARY VOLUME R1010G-A10K-H0-L3 (10KAx2) XV010702GPV1N15A10K-9606/RK10J12E0	030-C10103-200	1
<b>CAPACITORS</b>			
C902,903,904,905,906	CERAMIC CAP 0.001 uF/50V +-10% (UP050B102K-BB) (AXIAL TAPED 52mm)	003-210210-050	5
C900,901	CERAMIC CAP 0.01 uF/16V +80%-20% (EP050YF103Z) (AXIAL TAPED 52mm)	003-210380-016	2
C122,273,274,313,314, 604,612	CHIP CAP 0.001 uF/50V +-10% (0603/1608) (MCH185C102KK/GRM39X7R102K50PT)	003-510212-050	7
C107	CHIP CAP 0.01 uF/25V +-10% (0603/1608) (MCH185C103KK/GRM39X7R103K25PT)	003-510312-025	1

## ELECTRICAL PARTS LIST - CONTINUED

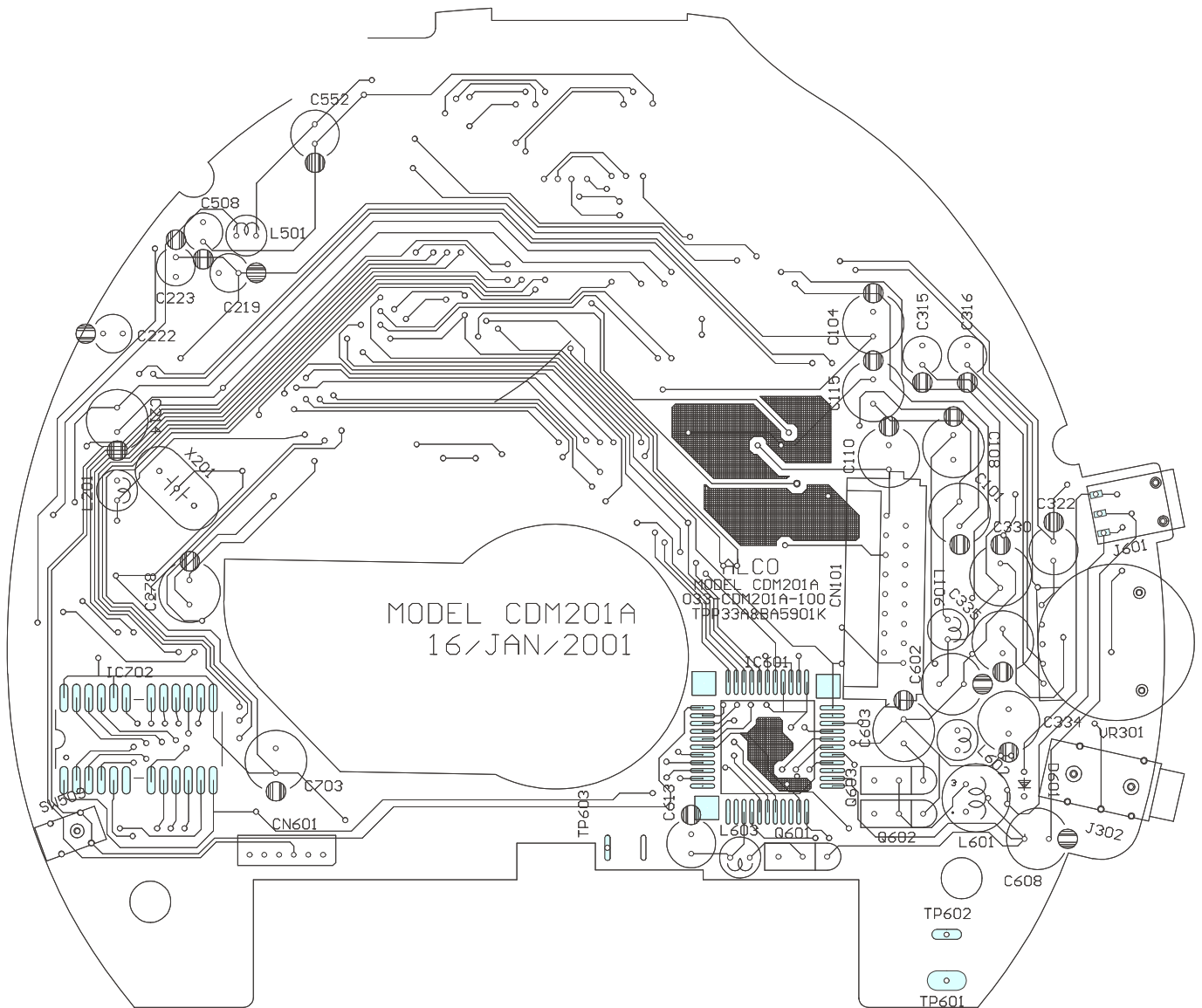
Ref. No.	Description	Mfr's Part No.	Qty.
C103,109,116,120,126, 136,165,202,215,217, 218,229,275,276,277, 279,501,504,506,507, 509,510,601,609,610, 801,133,134,220,228 C138,226,227,310,606	CHIP CAP 0.1 uF/16V +80-20% (0603/1608) (MCH182F104ZK/GRM39Y5V104Z16PT)	003-510482-016	30
C137	CHIP CAP 1 uf/16V +80-20% (0805/2012) (EMK212F105ZG-T) (MCH213F105ZP)	003-510580-016	5
C216,221	CHIP CAP 0.0022 uF/50V +-10% (0603/1608) (UMK107B222KZ-TM)	003-522212-050	1
C224,605	CHIP CAP 0.22 uf/16V +80-20% (0603/1608)	003-522482-016	2
C206	CHIP CAP 0.0033 uF/50V +-10% (0603/1608) (F003-533382-016) CHIP CAP 0.033 uf/25V +80-20%(0603/1608)	003-533212-050 003-533382-025	2 1
C308	CHIP CAP 0.47 uF/16V +80-20% (0805/2012) (EMK212F474ZD-T/GRM40Y5V474Z16PT)	003-547480-016	1
C127	CHIP CAP 0.0068 uF/50V +-10% (0603/1608)	003-568212-050	1
C203,204	CHIP CAP 15 pF/50V +-5% NPO (0603/1608) (UMK107CH150JZ-TM)	003-615052-050	2
C271,272	CHIP CAP 150 pf/50V +-5% NPO (0603/1608) (GRM39COG151J50PT/MCH185A151JK)	003-615152-050	2
C168,616	CHIP CAP 47 pf/50V +-5% NPO (0603/1608)	003-647052-050	2
C611,167	CHIP CAP 470 pF/50V +-5% NPO (0603/1608)	003-647152-050	2
C223	ELECT CAP 2.2 MFD/50V +-20% (SMALL SIZE) (4x7)	006-102000-50D	1
C219,222	ELECT CAP 3.3 MFD/50V +-20% (SMALL SIZE) (SRA/4x7)	006-103000-50C	2
C315,316,508	ELECT CAP 4.7 MFD/50V +-20% (SMALL SIZE) (4x7)	006-104000-50D	3
C608	ELECT CAP 220 MFD/10V +-20% (SMALL SIZE) (6.3x7)	006-122100-10D	1
C613	ELECT CAP 33 MFD/16V +-20% (SMALL SIZE) (5x7)	006-133000-16D	1
C278,322,552,104	ELECT CAP 47 MFD/10V +-20% (SMALL SIZE) (5x7)	006-147000-10D	4
C101,214,108,110,115	ELECT CAP 100 MFD/6.3V +-20%(SMALL SIZE) (5x7)	006-210100-06D	5
C334,335,602,603,330	ELECT CAP 220 MFD/4V +-20% (SMALL SIZE) (MAD/6.3x5)	006-222100-04C	5
<b>TRANSISTORS</b>			
Q601	TR PNPPWR-RAD&SC-072 2SA1585S-Q/E/R	008-101585-000	1
Q101	TRLNPNSSST-RAD&&&&&& 2SA1774	008-101774-000	1
Q602,603	TR NPNGEN-RAD&SC-072 2SC4115SR/Q/S/STPR/STPQ/STPS	008-304115-000	2
Q308	TRLNPNSSST-RAD&&&&&& DTC114TE	008-A00114-F00	1
Q305	TR PNPSST-RAD&SC-072 DTA144TUA (ROHM)	008-A00144-900	1
<b>INTEGRATED CIRCUITS</b>			
IC501	ICMCU-16K-LCD BU24591-7H 4BIT 1CHIP CPU	010-352459-000	1
IC201	ICCDP-005CDSP BU9528KS CD SERVO LSI	010-359528-000	1
IC301	ICAMP-HEAD-ST-0.003W BH3544F	010-403544-000	1
IC601	IC BA5901K	010-405901-000	1
IC101	ICCDP-005CASP BA6772FS CD RF AMPLIFIER	010-406772-000	1
<b>DIODES</b>			
D607	DIODE RB100A/1S40	011-000100-000	1
D601	RECTIFIER IN-4001B	011-024001-000	1
D501	CHIP DIODE DAN202U	011-040202-003	1
<b>INDUCTORS</b>			

## ELECTRICAL PARTS LIST - CONTINUED

Ref. No.	Description	Mfr's Part No.	Qty.
L601	IFT R0002-CY68-950M-825549 10mm	012-825549-010	1
L501	INDUCTOR 100 uH /1128/CEC-101K +-10% LAL03 TB 101K	018-010014-000	1
L602,106	INDUCTOR 10 uH R0002-CW45-100K-820130 5x7.5mm =018-010015-200	018-010015-000	2
L101,301	INDUCTOR 10 uH +-5% CECS-100J-823465 2.5x4mm (COILS)	018-010016-007	2
L603	INDUCTOR 33 uH +-10% RL4055-330K w/UL TUBE =018-010336-005	018-010336-200	1
<b>RESONATOR</b>			
X201	CERAMIC RESONATOR 16.93 MHz ZTA16.93MX (ZHEJIANG JIAKANG)	020-001693-005	1
<b>SWITCH</b>			
SW509	TACT SW (DETECTOR SWITCH) ESE11SV1 1P1T 151E-SE-11SV1 (RxO) DS-20	021-001111-000	1
<b>MISCELLANEOUS</b>			
J302	HEAT SEAL CONN 13 PINS 13mm PITCH:1mm YUTEK/TAIWAN 1310S-13C HEADPHONE JACK HSJ1715-01-112 (GREEN) TC38-072-02/EJS-3-0935G	059-130013-100 116-001715-000	1 1
J601	DC JACK #TC18-077-01 (TAI CHUNG) (87-A60-122-019)	120-118077-001	1
CN601	HEADER JST 6 PINS W150V-06T PITCH 1.5mm VERTICAL TYPE	135-B06BZR-061	1
CN501	FFC SOCKET 16 PINS P:1mm DOUBLE CONTACT #FPC1.0C-SMT-16PW-R1 =135-001056-160	135-FPCSMT-161	1
CN101	FFC CONN SOCKET 16PINS P:1mm TAIKO DENKI HORIZONTAL TOC-A16X-B2/D100-SRA-16 (F114-010810-000) HEADPHONE SET #AR103 IN EAR	135-TOCA16-160 114-010103-000	1 1
UNIT"PC"	APD-EI35GS&&350MA/SO 230V:6VDC CE STD (35V-D0635/06035-PV3131-5)w/MADE IN CH	133-020635-004	1
	FLEXIBLE PWB 16 PINS L=125mm(62.5+62.5) P:1.0mm MATERIAL:POLYESTER	044-160125-010	0.5
	LCD-P-02D-2616SM000P JT4-00033 26x16x2.8mm REFLECTIVE/POSITIVE	112-000033-000	1
	CD&-PTC-01-THOM-N CD MECHANISM TPP33AC (THOMSON)	153-000033-002	1

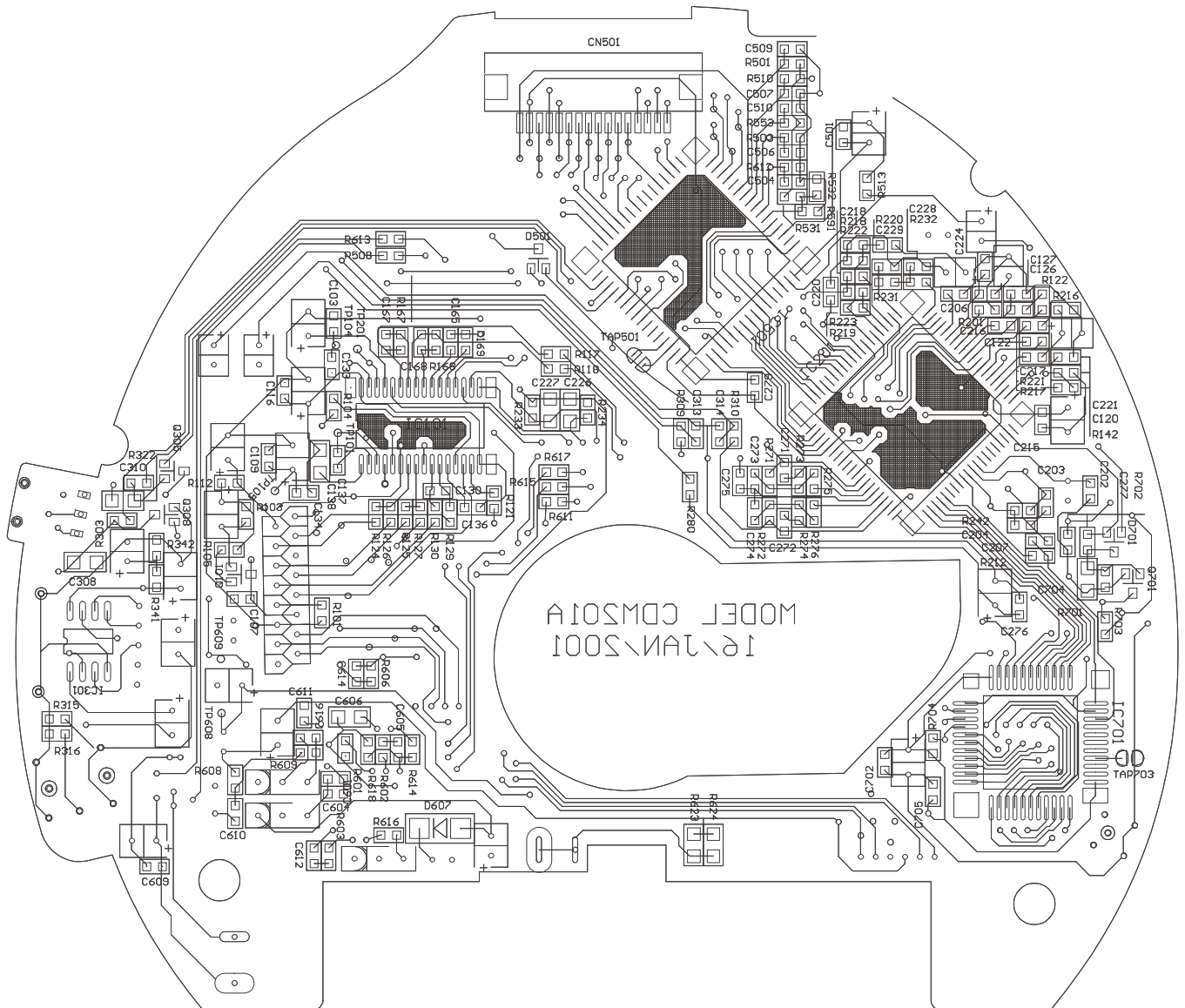
# PRINTED CIRCUIT BOARDS

## MAIN BOARD CDM201-40-01-01

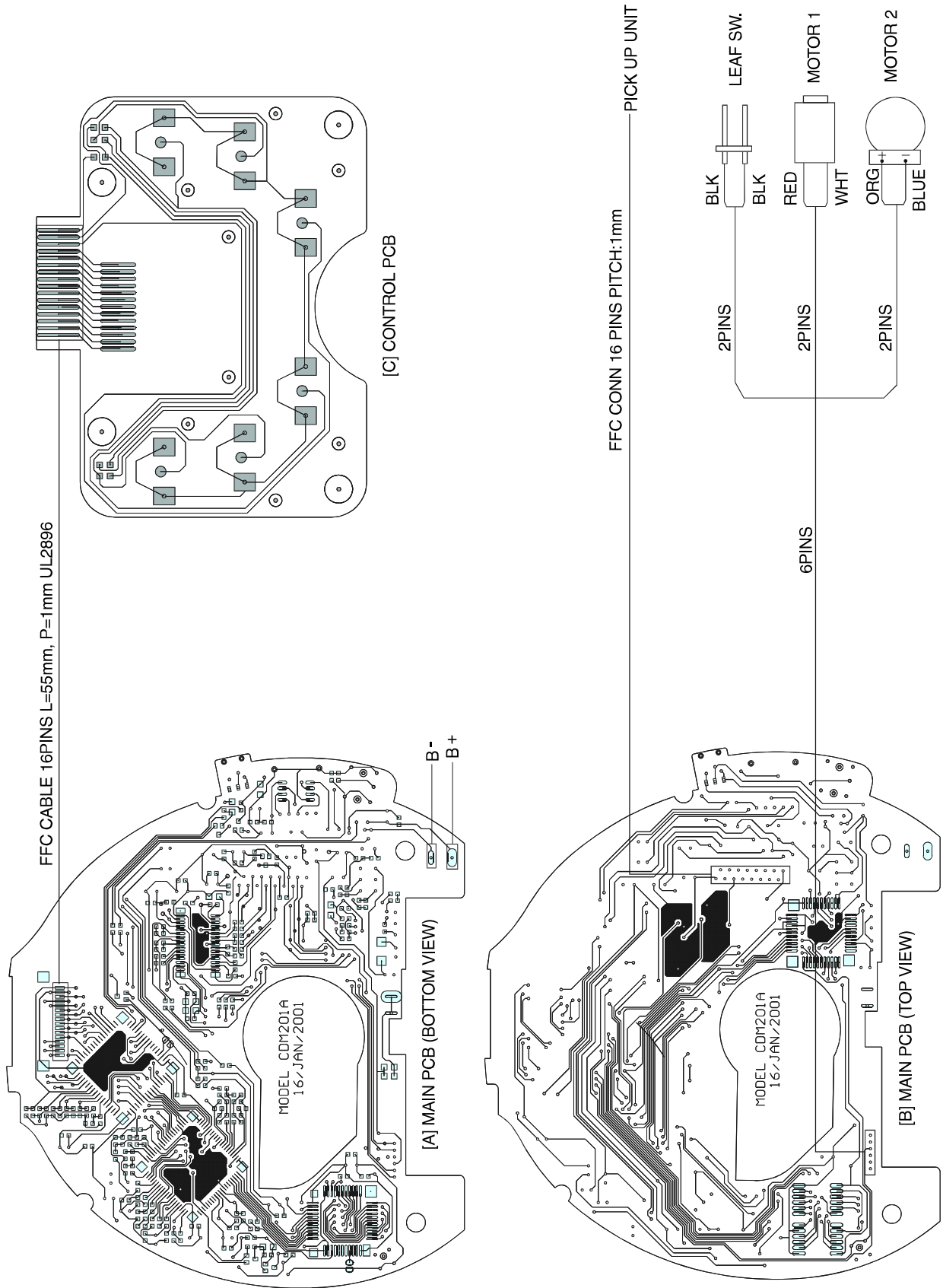


TOP VIEW

# **MAIN BOARD** **CDM201-40-01-01**

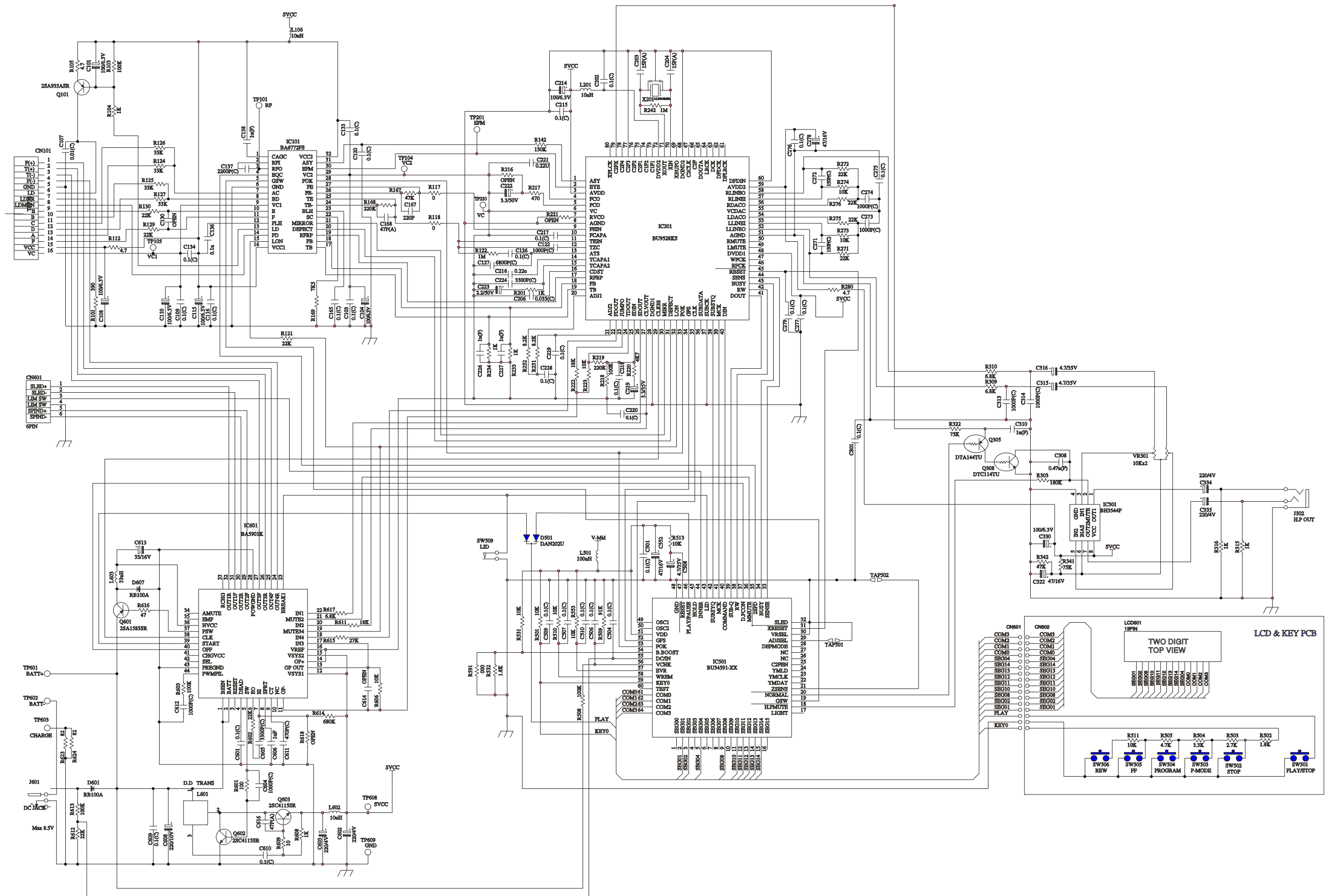


# WIRING DIAGRAM





# SCHEMATIC DIAGRAM



THE MEASURED VALUE IS DC VOLTAGE

UNIT:V

TEST CONDITION: CD PLAY

IC501 (BU24591-7H)

PIN'S NUMBER	1	2	3	4	5	6	7	8
	1.56	1.56	1.56	1.57	1.56	2	1.57	1.56
PIN'S NUMBER	9	10	11	12	13	14	15	16
	1.56	1.56	1.56	1.56	1.56	1.56	1.56	1.56
PIN'S NUMBER	17	18	19	20	21	22	23	24
	0.02	3.10	0.04	0.02	0.05	0.04	0.17	0.17
PIN'S NUMBER	25	26	27	28	29	30	31	32
	3.10	3.10	3.10	3.10	3.10	0.02	3.10	0.26
PIN'S NUMBER	33	34	35	36	37	38	39	40
	0.03	3.10	1.44	0.03	3.10	3.09	0.05	0.05
PIN'S NUMBER	41	42	43	44	45	46	47	48
	3.10	0.06	0.02	2.48	3.10	3.10	3.10	0.02
PIN'S NUMBER	49	50	51	52	53	54	55	56
	1.54	1.41	0	3.10	2.96	1.29	0.02	1.43
PIN'S NUMBER	57	58	59	60	61	62	63	64
	3.10	3.10	3.10	0.02	1.56	1.55	1.55	1.56

IC101 (BA6772FS)

PIN'S NUMBER	1	2	3	4	5	6	7	8	9	10	11
	1.98	1.57	1.57	1.45	0.03	0.02	1.61	1.62	1.58	0	1.75
PIN'S NUMBER	12	13	14	15	16	17	18	19	20	21	22
	1.50	2.13	0.22	1.82	0	0	1.59	1.76	0.09	0.03	1.22
PIN'S NUMBER	23	24	25	26	27	28	29	30	31	32	
	0	1.57	1.59	1.57	0	2.96	1.57	1.52	1.58	3.11	

IC201 (BU9528KS)

PIN'S NUMBER	1	2	3	4	5	6	7	8	9	10
	1.57	1.57	3.12	1.57	1.57	0.74	0	1.56	1.58	1.57
PIN'S NUMBER	11	12	13	14	15	16	17	18	19	20
	1.57	1.57	1.55	1.57	1.55	1.57	1.57	1.58	1.58	0.23
PIN'S NUMBER	21	22	23	24	25	26	27	28	29	30
	0	0	1.47	1.57	1.58	1.72	1.63	0.00	1.56	0
PIN'S NUMBER	31	32	33	34	35	36	37	38	39	40
	0	3.10	2.98	0	1.54	0	0	0	0	0.04
PIN'S NUMBER	41	42	43	44	45	46	47	48	49	50
	3.10	3.10	0	3.11	3.10	3.10	3.11	3.11	3.11	0
PIN'S NUMBER	51	52	53	54	55	56	57	58	59	60
	1.55	1.56	1.56	1.56	1.58	1.56	1.55	1.55	3.09	1.06
PIN'S NUMBER	61	62	63	64	65	66	67	68	69	70
	1.56	1.56	1.55	1.56	1.06	0	1.56	0	1.40	0.57
PIN'S NUMBER	71	72	73	74	75	76	77	78	79	80
	1.60	3.11	0	0	0	0	0	3.10	1.44	1.55

IC301 (BH3544F)

PIN'S NUMBER	1	2	3	4	5	6	7	8
PLAY	1.19	1.64	1.20	0	1.20	1.20	1.20	3.11

## VOLTAGE CHART

IC601 (BA5901K)

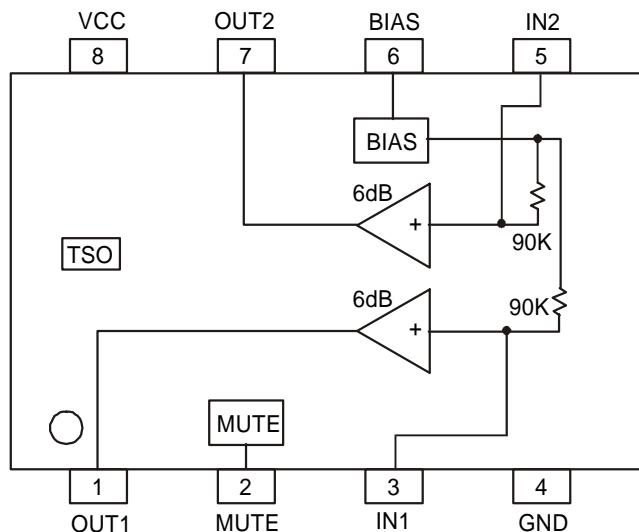
PIN'S NUMBER	1	2	3	4	5	6	7	8	9	10	11
	4.84	5.96	3.08	0.84	0.13	0.62	1.19	0.02	0.78	0.17	0.14
PIN'S NUMBER	12	13	14	15	16	17	18	19	20	21	22
	3.11	3.02	0.62	3.11	1.57	0	1.57	3.10	1.59	0	1.53
PIN'S NUMBER	23	24	25	26	27	28	29	30	31	32	33
	0	1.12	0.09	0	0	0	0	0	0	0	0
PIN'S NUMBER	34	35	36	37	38	39	40	41	42	43	44
	0	0.12	0.88	5.80	1.55	5.74	3.05	0.05	5.90	0	0.47

## ALIGNMENT SET-UP PROCEDURES

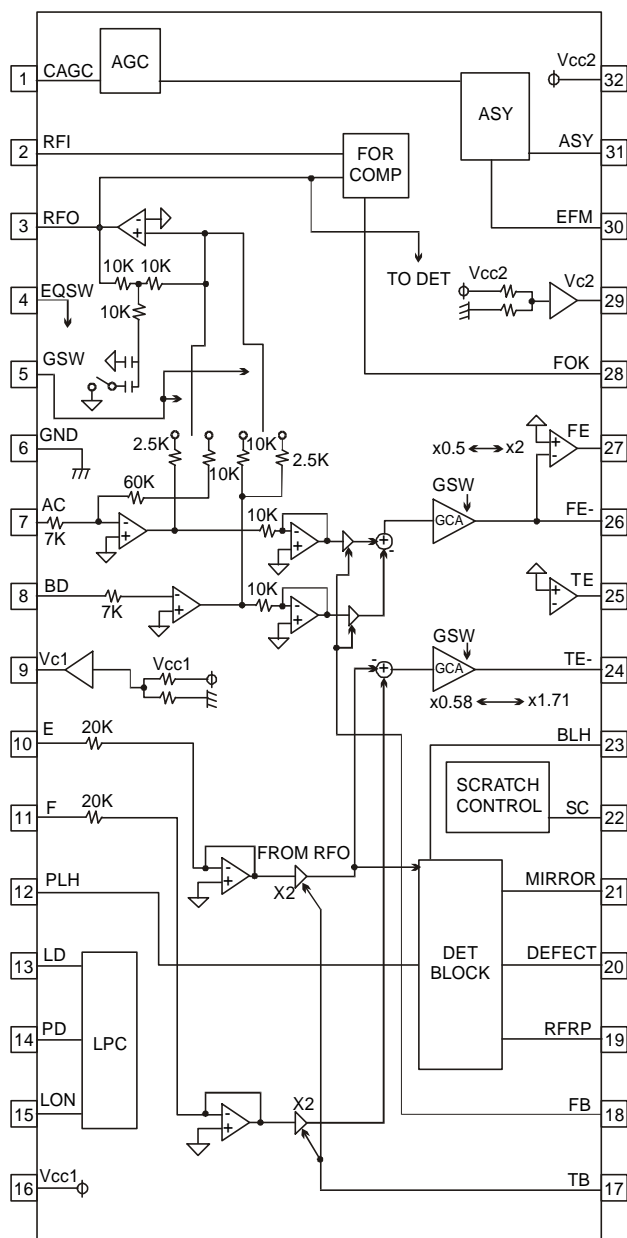
There is no need to adjust the CD servo PWB. Because auto-adjustment function has been set by the CPU.

## IC BLOCK DIAGRAMS & IC PINS DESCRIPTION

### IC301 BH3544F



### IC101 BA6772FS



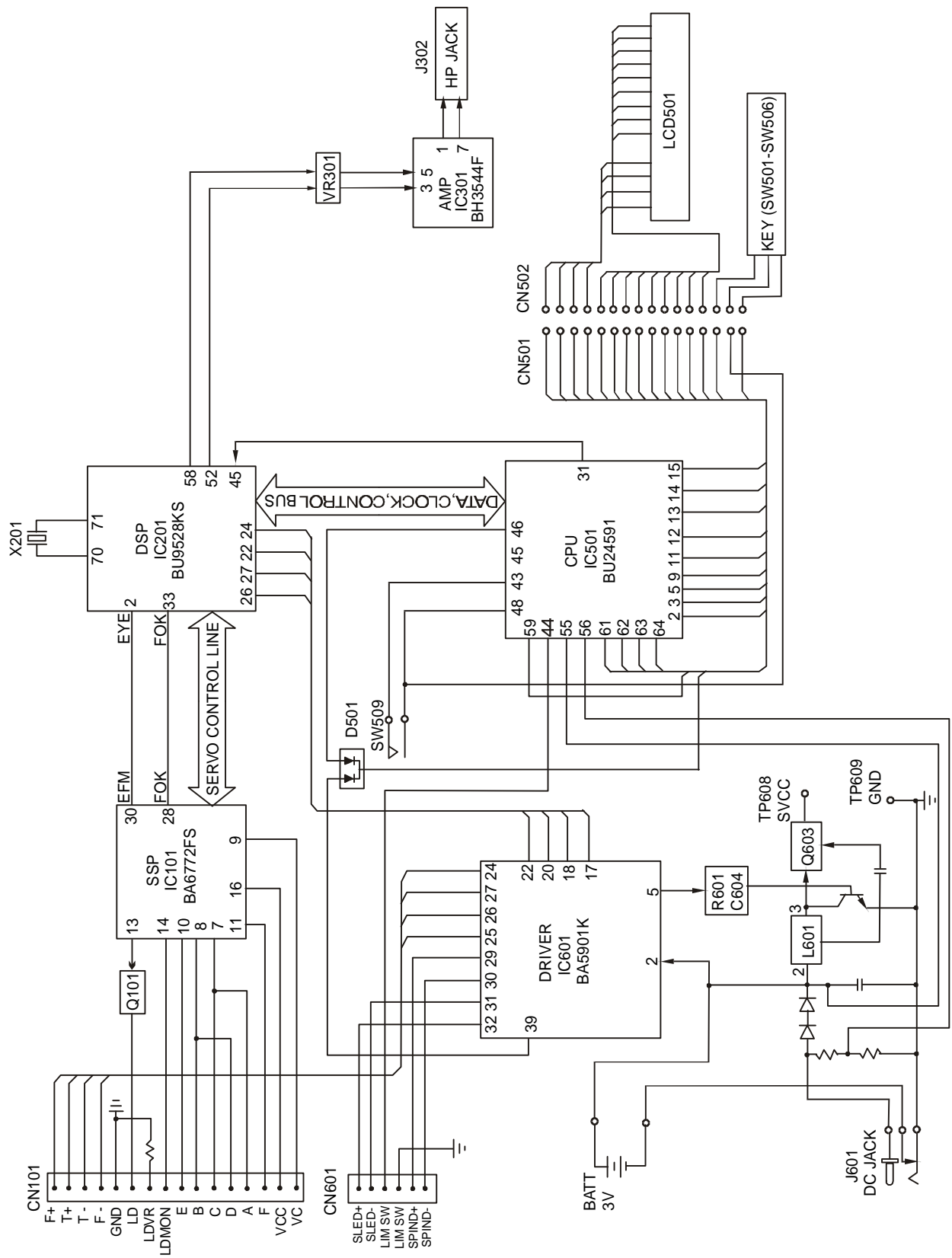
# IC201 BU9528KS



**IC601 BA5901K PINS DESCRIPTION**

Pin No.	Pin Name	Function
1	BSEN	Battery voltage monitor terminal
2	BATT	Battery power supply input terminal
3	RESET	Cassette detection output terminal
4	DEAD	Dead-time setting terminal
5	SW	Booster transistor drive terminal
6	EO	Error amplifier output terminal
7	EI	Error amplifier input terminal
8	SPRT	Short-circuit protection setting terminal
9	CT	Triangular wave output terminal
10	N.C	
11	OP-	Operational amplifier negative input terminal
12	VSYSI	Control circuit power supply input terminal
13	OPOUT	Operational amplifier output terminal
14	OP+	Operational amplifier positive input terminal
15	VSYS2	Pre-driver power supply input terminal
16	VREF	Reference power supply input terminal
17	IN3	CH3 control signal input terminal
18	IN4	CH4 control signal input terminal
19	MUTE34	CH3/CH4 mute terminal
20	IN2	CH2 control signal input terminal
21	MUTE2	CH2 mute terminal
22	IN1	CH1 control signal input terminal
23	BRAKE1	CH1 brake terminal
24	OUT4R	CH4 negative output
25	OUT4F	CH4 positive output
26	OUT3R	CH3 negative output
27	OUT3F	CH3 positive output
28	POWGND	Power unit power supply ground
29	OUT2F	CH2 positive output
30	OUT2R	CH2 negative output
31	OUT1F	CH1 positive output
32	OUT1R	CH1 negative output
33	RCHG	Charging current setting terminal
34	AMUTE	Reset inversion output terminal
35	EMP	"Empty" detection output terminal
36	HVCC	H-bridge power supply input terminal
37	PSW	PWM transistor drive terminal
38	CLK	External clock synchronization input terminal
39	START	Boost DC/DC converter starting terminal
40	OFF	Boost DC/DC converter OFF terminal
41	CHGVCC	Charging circuit power supply input terminal
42	SEL	"Empty" detection level switching terminal
43	PREGND	Pre-unit power supply ground terminal
44	PWMFIL	PWM phase compensation terminal

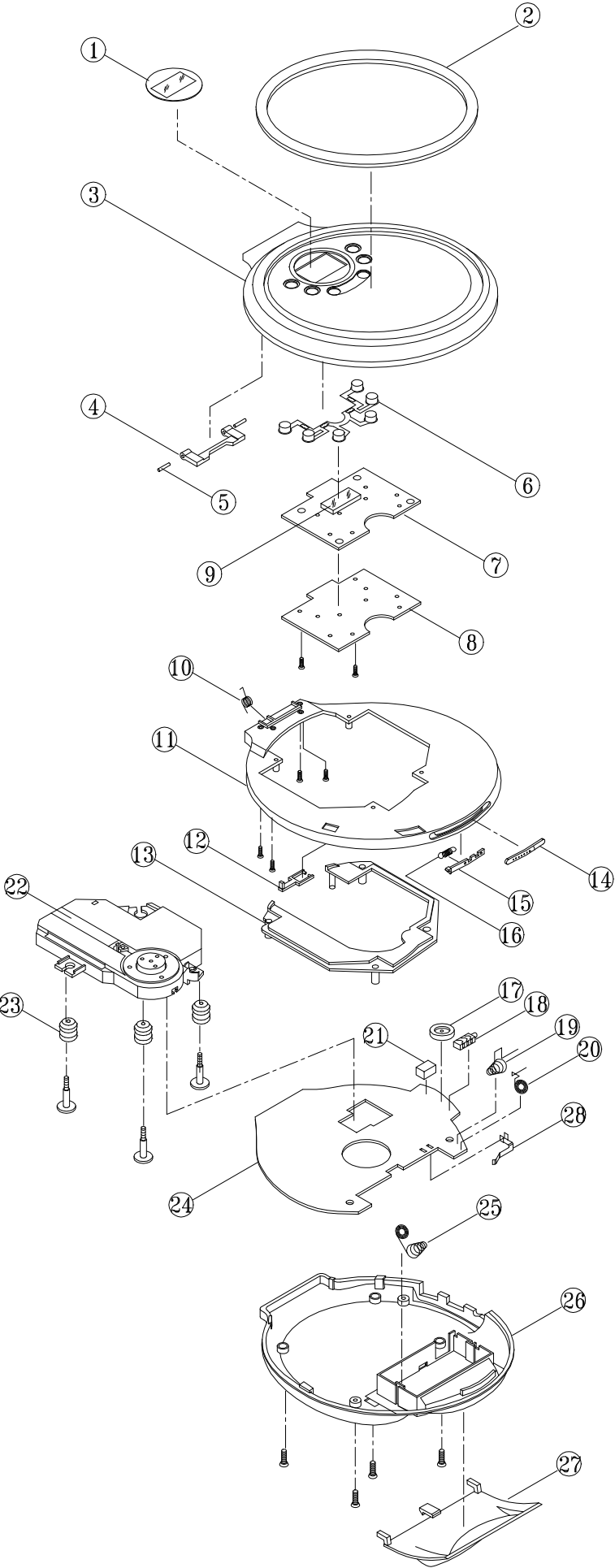
# BLOCK DIAGRAM



EXPLODED DRAWING & MECHANICAL PARTS LIST

Ref. No.	Description	Mfr's Part No.	Qty.
1	LENS PLATE, T:0.5mm TRANS PVC w/PNT	650-870115-xxx	1
2	CD DOOR RING, MOLF TRANS.BLUE J32198 (SAN) CAV:2	509-870003-001	1
3	CD DOOR, MOLD COLOR (ABS) CAV:1, w/SPY & PNT	500-870001-xxx	1
4	CD DOOR BRACKET, MOLD BLACK (POM) CAV:8	505-870111-000	1
5	CD DOOR PIN, DIA:1.5x7.2mm SUS 303F	609-870116-001	2
6	DOOR KNOB SET MOLF C.GR w/SPY (ABS) CAV:2	510-870002-xxx	1
7	CONTROL PCB CDM212-01-01	033-CDM212-101	1
8	PCB COVER, MOLD BLACK (ABS) CAV:4	500-870108-000	1
9	LCD-P-02D-2616SM000P JT4-00033, 26x16x2.8mm REFLECTIVE/POSITIVE	112-000033-000	1
10	CD DOOR SPRING, DIA:0.7mm, SPRING WIRE w/NICKEL	561-870117-001	1
11	MIDDLE CABINET, MOLD BLACK (ABS) CAV:2	500-870102-000	1
12	SWITCH LEVER, MOLD BLACK (ABS) CAV:4	509-870107-000	1
13	CD MECH BRACKET (THOMSON) MOLD BLACK (ABS) CAV:2	505-870104-000	1
14	DOOR OPEN KNOB, MOLD BLACK (ABS) CAV:4	510-870106-000	1
15	DOOR LOCK, MOLD BLACK (PC) CAV:4	509-870109-000	1
16	DOOR LOCK SPRING, DIA:0.25mm SUS WIRE	561-870120-000	1
17	ROTARY VOLUME R1010G-A10K-H0-L3 (10KAx2) XV010702GPV1N15A10K-9606/RK10J12E0	VR301 030-C10103-200	1
18	HEADPHONE JACK HSJ1715-01-112 (GREEN) TC38-072-02/EJS-3-0935G	J302 116-001715-000	1
19	BATTERY SPRING (-) DIA:0.7mm SPRING WIRE w/NICKEL	535-870119-000	1
20	BATTERY SPRING (+) DIA:0.7mm SPRING WIRE w/NICKEL	535-870118-000	1
21	DC JACK #TC18-077-01 (TAI CHUNG) (87-A60-122-019)	J601 120-118077-001	1
22	CD&-PTC-01-THOM-N CD MECHANISM TPP33AC (THOMSON)	153-000033-002	1
23	CD CUSHION (RUBBER)	700-890314-000	3
24	MAIN PCB CDM201-40-01-01	033-CDM201-100	1
25	BATTERY SPRING (+/-) DIA:0.7mm SPRING WIRE w/NICKEL	535-890319-000	1
26	BOTTOM CABINET MOLD BLACK (ABS) CAV:2	500-870103-000	1
27	BATTERY DOOR MOLD BLACK (ABS) CAV:4	500-870110-000	1
28	BATTERY CHARGE PLATE, 0.2mm THK PHOSHOR BRONZE	650-870121-000	1
	SCREW 1.7x3mm FLAT HEAD (B TYPE) (1.7x3IPBHF)	2/CD DOOR BKT 720-220170-300	2
	SCREW 1.7x3.5mm FLAT HEAD (B TYPE) (1.7x3.5IPBHF)	2/PCB COVER 720-220170-350	4
	SCREW 2x8mm PB T.T.S. w/CHROMATE PLATING (PTTP2x8MC)	4/BOTT.CAB. 722-020200-082	4
	CD SCREW, STEEL	723-048903-000	3
	PVC WASHER DIA:4.2x8.0x0.3mm TRANS.PVC	532-504208-031	1

EXPLODED DRAWING



NOTES:

***ALCO ELECTRONICS LTD***  
***OCTOBER, 2001***